



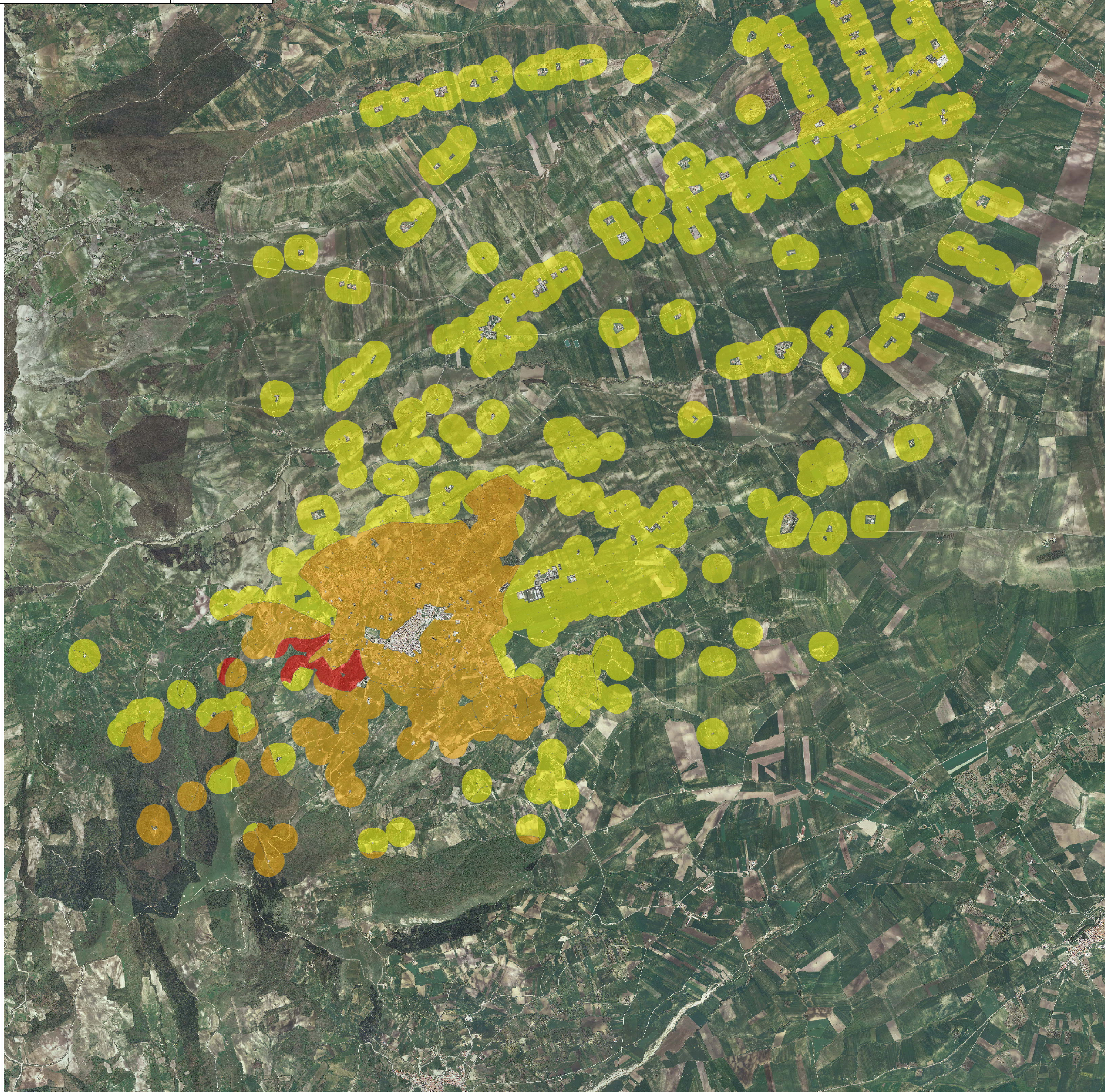
RISCHIO INCENDI BOSCHIVI
Individuazione della pericolosità

Redazione
F&P Progetti - Studio Associato - Ing. Alfredo FERRANDINO
Via Spagna, 8 - 71100 - Foggia - Tel./Fax. 0881/66985

IL R.U.P.
geom. Nicola LA PENNA




Studio Tecnico - Ing. Caterina Ingelido
Via P. Genovese, 112 - 71022 - Biccari (FG)

IL SINDACO
Prof. Giovanni PICARO



Legenda

CLASSE

-  bassa
-  media
-  alta